



# Customer Services Property Report

**THIS IS NOT A LIM REPORT**

Report Generated: 16/07/2025 12:31:54 pm

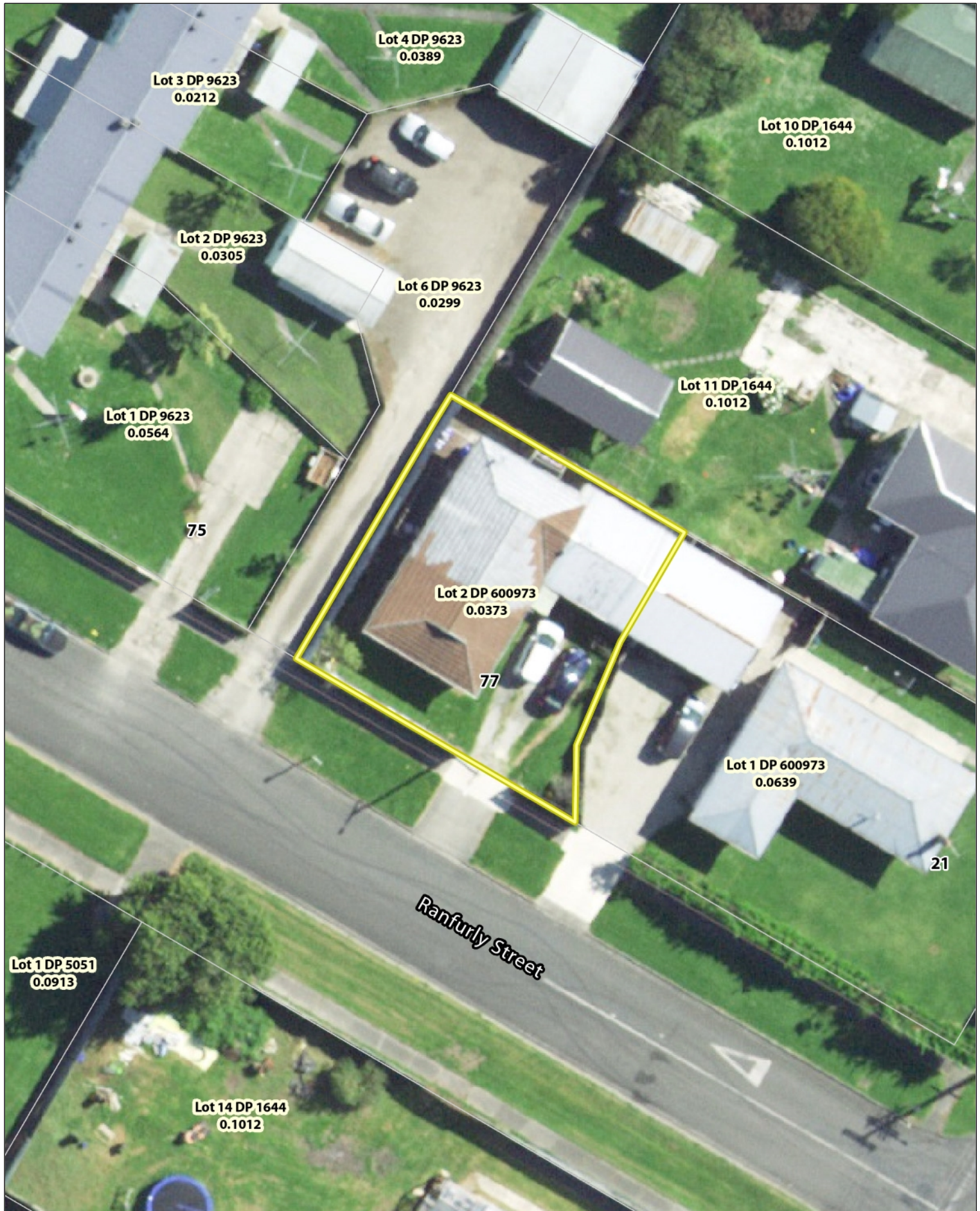
Valuation Address	77 Ranfurly Street Kaiti
Assessment Number	0841139602
Legal Description	LOT 2 DP 600973
Title	1170105
Capital Value	\$ 330000
Land Value	\$ 130000
Annual Rates	\$ 3557.65
Area (ha)	0.0373
Rubbish Day	MONDAY
District Plan Zone	General Residential
Building Consents	23385-Domestic Garage/Outbuild   9517-Additions/Alterations
Resource Consents	



Google  
Google Streetview Image

Information on this plan is indicative only and not mapped to a survey accurate scale. Gisborne District Council accepts no liability for its accuracy and it is your responsibility to ensure that the data contained herein is appropriate and applicable to the end use intended. The information included in this report is indicative only and does not purport to be a complete database of all information in Gisborne District Council's possession or control. Gisborne District Council shall not be liable for any loss, damage, cost or expense (whether direct or indirect) arising from reliance upon or use of any information provided, or Council's failure to provide this report. Copyright under Creative Commons Attribution 4.0 International licence. May contain data sourced from the LINZ Data Service, BOPLASS or Gisborne District Council. For more detailed information relating to this property please request a Land Information Memorandum report from Gisborne District Council - <http://www.gdc.govt.nz/land-information-memorandum-lim/>

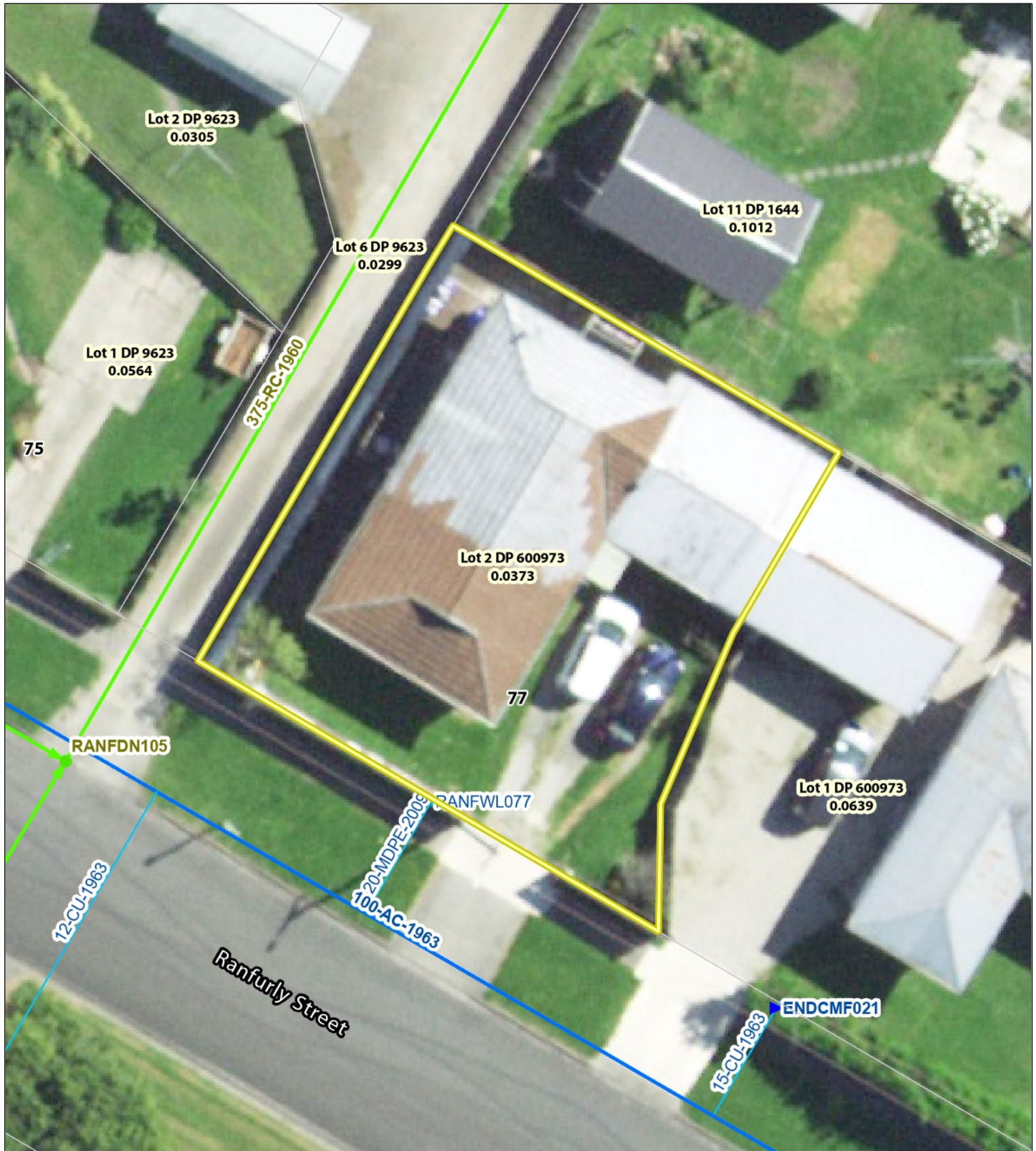
# Locality Map



Information on this plan is indicative only and not mapped to a survey accurate scale. Gisborne District Council accepts no liability for its accuracy and it is your responsibility to ensure that the data contained herein is appropriate and applicable to the end use intended. The information included in this report is indicative only and does not purport to be a complete database of all information in Gisborne District Council's possession or control. Gisborne District Council shall not be liable for any loss, damage, cost or expense (whether direct or indirect) arising from reliance upon or use of any information provided, or Council's failure to provide this report. Copyright under Creative Commons Attribution 4.0 International licence. May contain data sourced from the LINZ Data Service, BOPLASS or Gisborne District Council. For more detailed information relating to this property please request a Land Information Memorandum report from Gisborne District Council - <http://www.gdc.govt.nz/land-information-memorandum-lim/>



# Utilities Map



Legend									
	Geotech Reports		Drain		GDC Node		Open Channel		Backflow
	Landfill Areas		Culvert		Pr. Manhole		Meter		Water Lateral
<b>Drains - Rural</b>		<b>Storm Water Services</b>		<b>Water Services</b>		<b>Waste Water Services</b>		<b>Water Main</b>	
	River		Manhole		Storm Water Drains		Pr. Hydrant		Private Main
	Stream		Sump		Storm Water Lateral		Pr. Valve		Unknown
			Node		Storm Water Main		Pr. Node		Pump Station
							Valve		Valve
							Sewer Main		Private Manhole
							Waste Water Lateral		Private Main

Information on this plan is indicative only and not mapped to a survey accurate scale. Gisborne District Council accepts no liability for its accuracy and it is your responsibility to ensure that the data contained herein is appropriate and applicable to the end use intended. The information included in this report is indicative only and does not purport to be a complete database of all information in Gisborne District Council's possession or control. Gisborne District Council shall not be liable for any loss, damage, cost or expense (whether direct or indirect) arising from reliance upon or use of any information provided, or Council's failure to provide this report. Copyright under Creative Commons Attribution 4.0 International licence. May contain data sourced from the LINZ Data Service, BOPLASS or Gisborne District Council. For more detailed information relating to this property please request a Land Information Memorandum report from Gisborne District Council - <http://www.gdc.govt.nz/land-information-memorandum-lim/>